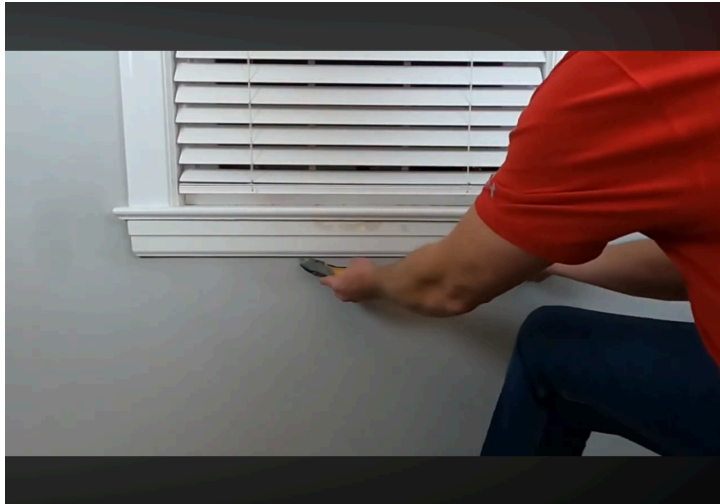


Installation Guide for Rescue Ready Retrofit Ladder

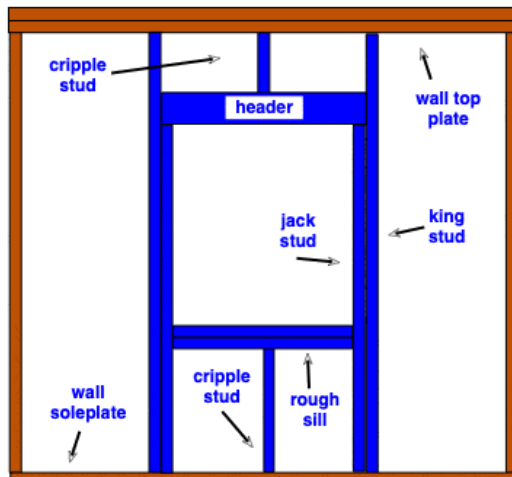
Step 1: Trim Removal (Optional)

If removing the window trim for a cleaner look, use a razor knife to score the edges where the trim meets the wall and other trim pieces. This scoring prevents the paint from peeling when you remove the trim. Use a small pry bar to gently work behind the trim, prying up along the length to remove it. You might be left with exposed drywall or unfinished paint, but the cover will eventually conceal this.



Step 2: Locating Structural Studs

Using a stud finder, locate the jack and king studs on each side of the window, as these are the structural members to which the ladder's pad eyes will be attached. The screws must go into these studs to provide adequate load bearing. Mark the edges of the studs with a stud finder to find their center. Alternatively, you can use a finish nail to locate the studs.



Installation Guide for Rescue Ready Retrofit Ladder

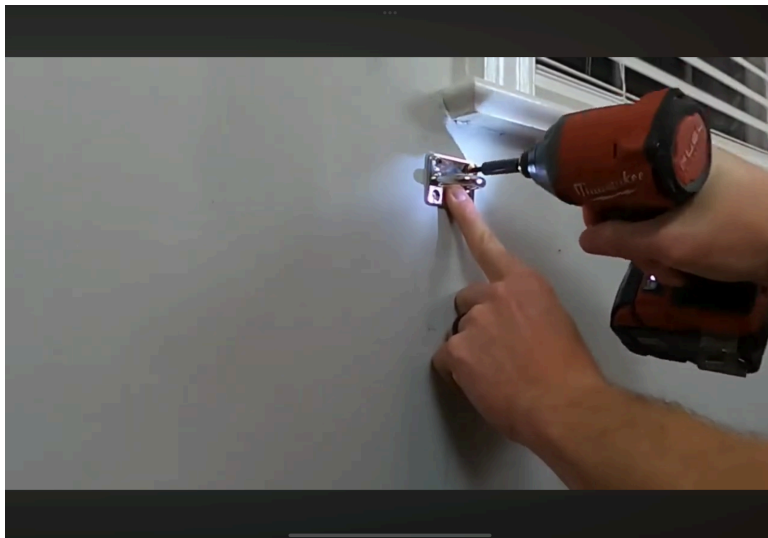
Step 3: Installing the Pad Eyes

Position each pad eye about an inch to an inch and a half below the window stool if you have removed the apron trim or below the window opening if there is no trim, centering it between the jack and king studs. Mark the screw holes for each pad eye. You may pre-drill holes with a 1/8-inch bit for easier installation, but this step isn't necessary because the screws have a pilot tip. You likely haven't hit a wood stud if the bit moves freely through the hole. If this happens, you must return to locating the stud's position.



Step 4: Securing the Pad Eyes

Place a pad eye over each set of holes and drive the screws until seated firmly. Repeat on both sides of the window, ensuring the ladder will be well-centered. If the screw does not sit firmly or just spins, you have either not hit the stud entirely, or you have just hit the very side of the stud. This is a crucial step for safely installing the RetroFit ladder.





Installation Guide for Rescue Ready Retrofit Ladder

Step 5: Threading the Webbing Through the Cam Mechanism

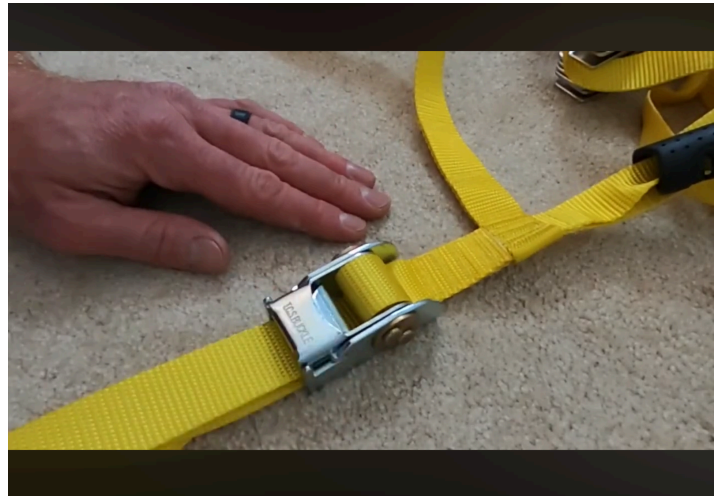
For each side of the ladder, run the webbing through the bottom of each pad eye and then through the cam mechanism following these steps:

- Thread under the bridge and through the large opening at the handle's top.



Installation Guide for Rescue Ready Retrofit Ladder

- Pull through the two brass cylinders, then secure it by snapping the handle back to hear an audible click.



- Test for proper threading by giving a tug. Improperly threaded cams will not hold the ladder's weight.
- This is another crucial step. If you experience difficulty, refer to the instructional video on YouTube.



Installation Guide for Rescue Ready Retrofit Ladder

Step 6: Centering and Securing the Ladder

Ensure the ladder is centered in the window. Adjust webbing tension on each side and tie two half hitches on each side to secure the ladder. Bring any excess webbing back through the pad eye and tie an overhand knot around the bundle. If there's extra webbing, either tuck it away or trim and burn the edges to prevent fraying.



Installation Guide for Rescue Ready Retrofit Ladder

Step 7: Installing the Cover

Determine your window type and surrounding material (wood, drywall, plaster) to decide on anchor placement.

- If installing beneath wood trim, position the brackets under it, with the provided 1/2" spacer on top of the bracket, and attach directly to the wood with wood screws. If attaching to drywall, use the provided drywall anchors and screws. Do not forget to place the 1/2" spacer on top of the bracket when attaching. This allows the cover to slip between the bracket and the wood trim. If you do not have wood trim, you can still use the spacer to see where the finished top edge of the cover will land.
- Locate the window sill, as these may provide wood backing. This is the horizontal wood framing in the wall that is usually directly under the window. For locations where there is only drywall where you plan to install your brackets, use drywall anchors to secure.
- Mark the center of your window stool, casing, or window opening. From the center mark, measure 3 1/4 inches to each side for the first set of brackets and 10 inches out for the second set of brackets. Position brackets with the supplied spacer, pushing up to ensure alignment with the trim. Use a pencil to mark holes for the screws.





Installation Guide for Rescue Ready Retrofit Ladder

Installing Drywall Anchors (if needed)

If using drywall anchors, create a pilot point using a scratch awl or another pointed tool, then drill with a 1/4-inch bit. Insert the anchor until it reaches the anchor's "shelf" or top collar. Install screws by hand to avoid over-tightening or spinning the anchor in the drywall.

Adjusting the Brackets

Once attached, apply light pressure to bend the brackets if needed, ensuring the cover sits evenly against the window trim, stool, or drywall. If you stick to the measurements provided, the Velcro on top of the brackets will align with the Velcro on the inside of the cover.

For Larger Windows

Some kits include six brackets for wider windows. Measure six inches beyond the second 10-inch bracket placement for the outer brackets.

Final Adjustment and Testing

Attach the cover to the Velcro on each bracket. If the cover does not sit flush, loosen the screws slightly and reposition. Make sure the ladder remains centered, with handles accessible for easy deployment. Pull the ladder inside the window and secure it with the red retention strap.

Support

If you have any installation questions, contact our support team at 757-435-8506 or by email at berescueready@gmail.com. We're here to help make your Rescue Ready Retrofit installation as smooth as possible.